



# ENGLISH FOR ACADEMIC PURPOSES 2017–2018

Study in Toronto, Canada

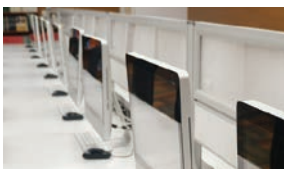


[georgebrown.ca/international/esl](http://georgebrown.ca/international/esl)



# Prepare for Success in Canada

George Brown College's full-time English for Academic Purposes program gives you the skills you need to be successful in Canada. Learn or improve your English in an environment that is focused on your future academic and career success.



## INTERACTIVE CLASSROOM TECHNOLOGY

Time spent in class is exciting and efficient.



## EXPERT ACADEMIC INSTRUCTORS

Language instruction is of the highest quality.



## RELEVANT, REFINED CURRICULUM

English for Academic Purposes prepares you for postsecondary study.



## SUPPORTIVE LEARNING ENVIRONMENT

George Brown College is committed to your success.



## GREAT DOWNTOWN LOCATION

Study in the heart of a wonderful city.



## VIBRANT STUDENT LIFE

Extracurricular activities augment your learning.

George Brown College is continually striving to improve its programs and their delivery. The information contained in this brochure is subject to change without notice. It should not be viewed as a representation, offer, or warranty. Students are responsible for verifying George Brown College admission, graduation, and fee requirements as well as any requirements of outside institutions, industry associations or other bodies that may award additional designations concurrently with, or after completion of, a George Brown College program.



## EXTRACURRICULAR



Movie Night



Book Club



Photography Club



Games Club



Speak Up

In addition to regular classwork, ESL students have many volunteering opportunities and can participate in free conversation groups to help improve their English. You also have access to all College facilities, including free internet and computer use, cafeteria, gymnasium and exercise rooms, and Student Centre Services.

There are a host of activities, events and workshops that you have the opportunity to participate in. *The Amazing Race* is a fun summer event where ESL students explore the College and the city. *Caravan* is an annual event where students celebrate their nationalities.

Many other special and seasonal events are celebrated throughout the year, such as pumpkin carving, *Halloween*, a holiday party, and regular field trips to local attractions and museums.

To learn more, visit: [georgebrown.ca/international/esl](http://georgebrown.ca/international/esl)

Are you still in high school and want to learn English? Our Summer English Program may be right for you. Ages 15 and up. To learn more, visit: [georgebrown.ca/summerenglish](http://georgebrown.ca/summerenglish)



*"Some of my best memories are of my time studying at George Brown College. From the faculty to the learning environment, my time there was more than what I could ever have expected. George Brown taught me that I could succeed as a student, a contributor and a professional. The knowledge and skills I learned will last me a lifetime."*

### Wei Zhang

Senior Customer Executive, KVB Kunlun Canada Inc.  
ESL Level 8 (2011); International Business Management (2012)



### ESL FOR BUSINESS

This is an option after level 6 for students planning a full-time academic Business program. It focuses on real-life communication skills required in business settings.



### ESL FOR HOSPITALITY

This is an option after level 6 for students planning a full-time academic Hospitality or Culinary Arts program. It focuses on real-life communication skills required in the fields of hospitality and culinary arts. If you successfully complete Smart Serve and Sanitation courses offered, you may be exempt from requiring to take them during your postsecondary studies at George Brown College.



*"As an ESL student, I wanted to improve my English in an international college that uses advanced technology training in state-of-the-art classrooms with effective and well-informed professors. While studying English, I made many friends and had much fun participating in a variety of activities. I strongly recommend George Brown College to anyone who would want to learn English."*

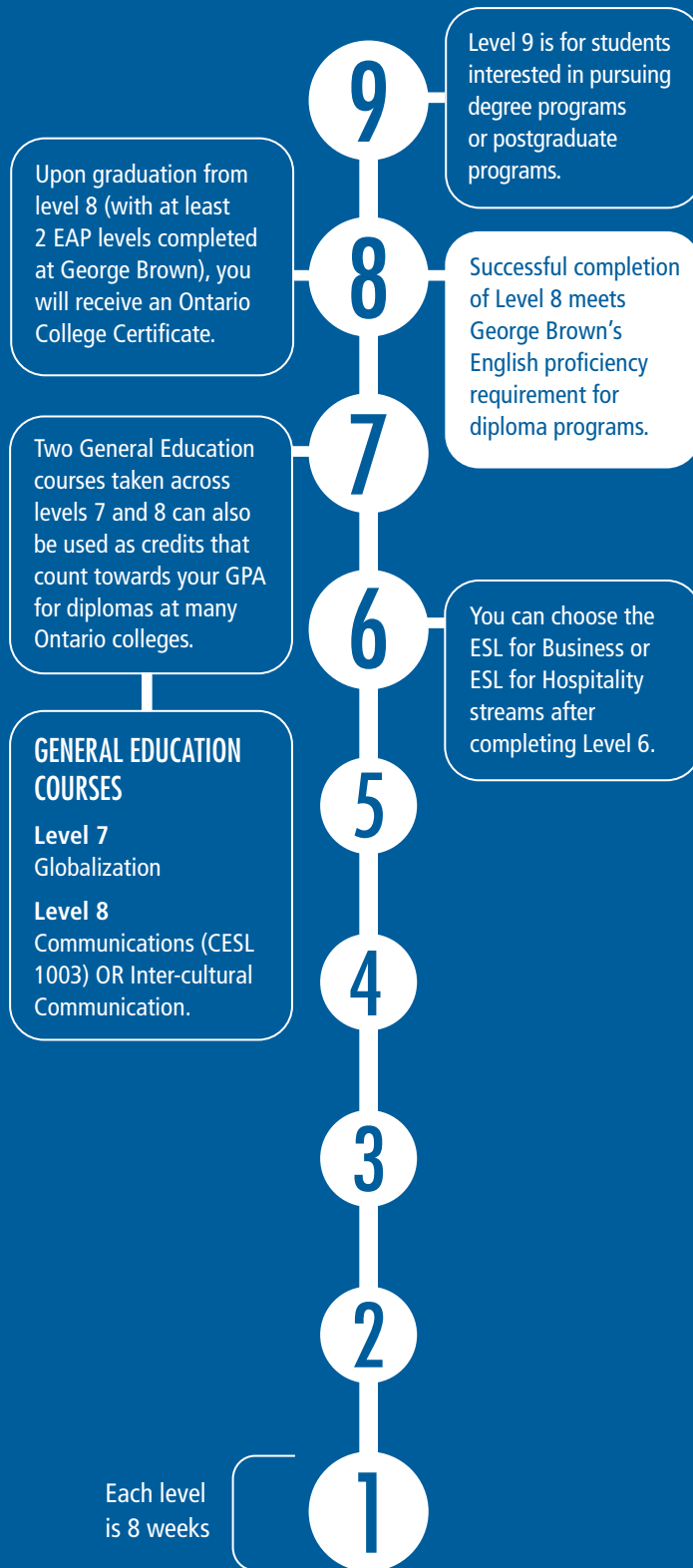
### Aram Hassanlee

ESL Business Program, Level 8 (2013)

George Brown College has signed an articulation agreement that allows EAP graduates to satisfy English language proficiency requirements at 14 participating colleges, without requiring further admissions testing for a diploma program. For more information, please visit: [georgebrown.ca/international/esl](http://georgebrown.ca/international/esl)

# EAP Program

George Brown's EAP (ESL) program is a full-time program divided into 9 levels of 8 weeks each. Your language skills are assessed when you arrive, or at the time of admissions based on a TOEFL/IELTS score, and you are placed in the level that is right for you.



## ESL DATES

### ACADEMIC YEAR: 2016/17

Placement Test	Start Date	End Date
Aug. 30, 2016	Sept. 6, 2016	Oct. 28, 2016
Oct. 25, 2016	Oct. 31, 2016	Dec. 21, 2016
Jan. 4, 2017	Jan. 9, 2017	March 3, 2017
Feb. 28, 2017	March 6, 2017	Apr. 28, 2017
May 2, 2017	May 8, 2017	June 30, 2017
June 27, 2017	July 3, 2017	Aug. 25, 2017

### ACADEMIC YEAR: 2017/18

Placement Test	Start Date	End Date
Aug. 29, 2017	Sept. 5, 2017	Oct. 27, 2017
Oct. 24, 2017	Oct. 30, 2017	Dec. 22, 2017
Jan. 4, 2018	Jan. 8, 2018	March 2, 2018
Feb. 27, 2018	March 5, 2018	Apr. 27, 2018
May 1, 2018	May 7, 2018	June 29, 2018
June 26, 2018	July 3, 2018	Aug. 24, 2018

## FEES AND RELATED COSTS (2016/17)

Tuition Fees	<b>\$2,688</b> (per 8 week session)
Additional fees for materials, Student Association, etc.	<b>\$200.72</b> (per 8 week session)
One time fees for first session (Student ID, Alumni)	<b>\$40.06</b> (one time, 1 <sup>st</sup> session)
Health Insurance	<b>\$73.22</b> (per 8 week session)
<b>TOTAL (new international ESL student)</b>	<b>\$3,002.00</b>

Application fee is \$95.

In addition, students should budget an average of \$80 for textbooks each session.

To apply for the English for Academic Purposes program at George Brown College please visit [applynow.georgebrown.ca](http://applynow.georgebrown.ca)

## TIMETABLE

TIME	MONDAY			TUESDAY	WEDNESDAY	THURSDAY	FRIDAY
	LEVELS 1-6	LEVELS 7-8	LEVEL 9	LEVELS 1-9	LEVELS 1-9	LEVELS 1-9	LEVELS 1-9
9:00-9:50	Specialized Class	General Education	Independent Study	Core Class	Core Class	Core Class	Core Class
9:50-10:40	Specialized Class	General Education	Independent Study	Core Class	Core Class	Core Class	Core Class
10:40-11:20	BREAK	BREAK	BREAK	BREAK	BREAK	BREAK	BREAK
11:20-12:10	Specialized Class	General Education	Independent Study	Core Class	Core Class	Core Class	Core Class
12:10-1:00	Specialized Class	General Education	Independent Study	Core Class	Core Class	Core Class	Core Class

English in Practice Schedule\* – Sign up at [gbcesl.eventbrite.ca](http://gbcesl.eventbrite.ca)

1:30-3:30	Workshops	Workshops	Workshops	Workshops	NO CLASSES
-----------	-----------	-----------	-----------	-----------	------------

\*Workshops are optional in Levels 7-9. In Levels 1-6, international students attend 7 per session.

#### Core Class (Levels 1-9):

2 hours/week online

**Core Class:** This class is where students learn the key skills to improve their academic English.

#### General Education (Levels 7-8):

2 hours/week online

**Specialized Class:** This class focuses on pronunciation, fluency and speaking skills.

## TESTING AND PLACEMENT


EAP offers full-time English instruction through 9 levels, each 8 weeks long. Applicants who have written the TOEFL or IELTS tests (Academic) can enter directly into an EAP level based on their test score (within two years).

Students who have not written either test will need to write a placement test the week before the program starts to determine their starting level.

EAP STARTING LEVEL*	IELTS: ENTRY requirements		TOEFL: ENTRY requirements		
	Overall	Writing & Speaking	Overall	Speaking	Writing
9	6	6.5	80-91	22	22
8	5.5	6	62-79	20	20
7	5.5	5.5	50-61	18	18
6	5.0	5	40-49	15	14
5	4.0-4.5	4.5	31-39	13	12
4	3.5	4	26-30	11	8
3	3	3.5	19-25	8	6
2	2.5	3	10-18	5	4
1	2.5	2.5	0-9	2.5	2.5

\*You will be placed in the EAP starting level that corresponds to your lowest score.

The information in the table above is subject to periodic review. Please check our website for the most up-to-date version. [georgebrown.ca/international/esl/admissions](http://georgebrown.ca/international/esl/admissions)



For students interested in taking the IELTS test in Toronto, the George Brown College Official IELTS Test Centre provides a complete IELTS Testing service. For more information, please visit: [georgebrown.ca/ielts](http://georgebrown.ca/ielts)



FOR MORE INFORMATION, CONTACT THE INTERNATIONAL CENTRE  
 200 King Street East (Main Floor), Toronto, Ontario, Canada M5A 3W8  
 Phone: 416-415-5000 ext. 2115  
 Fax: 416-415-2120  
 Email: [international@georgebrown.ca](mailto:international@georgebrown.ca)

[/georgebrowninternational](https://www.facebook.com/georgebrowninternational)  
[/gbc.esl](https://www.facebook.com/gbc.esl)



[georgebrown.ca/international/esl](http://georgebrown.ca/international/esl)



30% Post-Consumer Waste